

Kitech

正德福

ITEM NO. 08M-364

AIR FRANCE

AIR FRANCE B-747-400

Read before assembly 組裝前敬請詳細閱讀

	Get the following tools ready: Modelling scissors, small cutter, A small file, tweezers.	請準備以下工具: 模型剪、小切刀、 小挫刀、尖嘴夾。
	Check the fitness of each part before cementing. Do not use too much cement to join parts.	在使用膠水前， 應先按圖示將部 件正確吻合一遍， 再塗上膠水。
	Painting: Use correct paint and colors as per instruction.	塗色: 請按照說明書的 指示，正確使用 塗料和顏色。

CAUTION:

- Before you start assembly, you should read all the instructions carefully.
- Please have all the necessary tools ready before start assembling.
- Please use a cutter to help to remove plastic parts. Be careful, do not break off any plastic parts.
- The remove plastic parts have sharp, pointed or Jagged edges. These edges have to be soften with a file or sandpaper.
- Check the fitness of each part before cementing
- Do not use glue or paint near an open flame. Keep the window open.
- Plastic bags can be dangerous. To avoid danger of suffocation keep this bag away from babies and children.
- Do not use too much cement to join parts. Too much cement could hinder the assembly.
- For child age 8 and up.

注意:

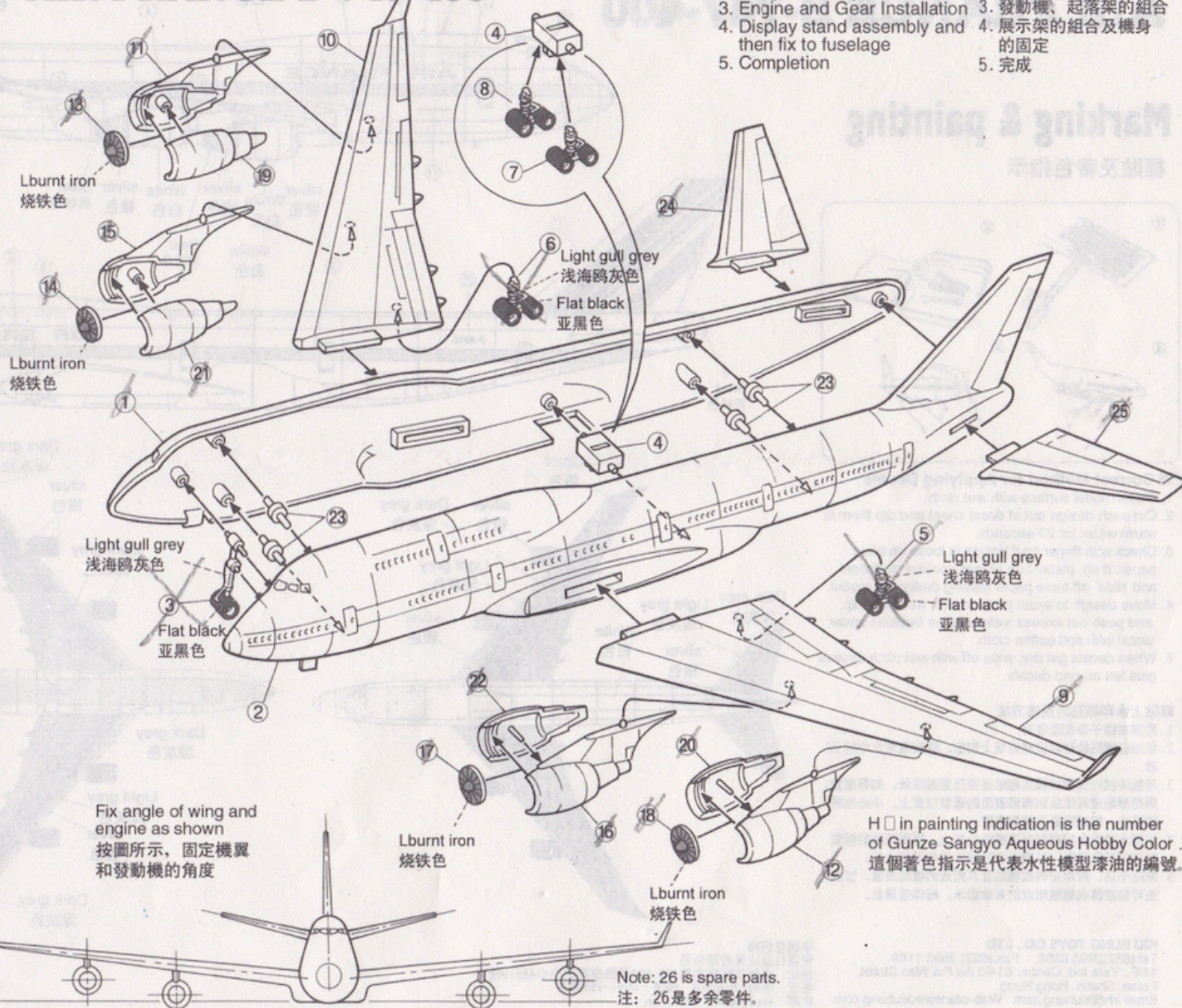
本品適合8岁以上，请在大人的监护下使用。使用工具应小心，注意安全。用模型剪从注塑片中取出零件，修去多余料头及飞边，勿拔取零件。使用模型胶勿过量，不得近火源。商品的空袋为了不让小孩套在头上，请撕毁。禁止把零件含入口。

执行标准: Q/FZDF 001-2001

Assembly orders:

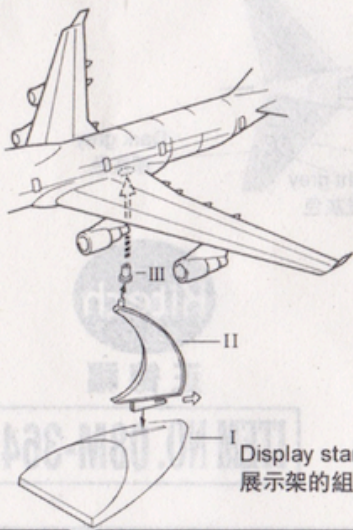
組裝的順序:

1. Fuselage assembly
 2. Wing assembly
 3. Engine and Gear Installation
 4. Display stand assembly and then fix to fuselage
 5. Completion
1. 機身的組合
 2. 機翼的組合
 3. 發動機、起落架的組合
 4. 展示架的組合及機身的固定
 5. 完成



Fix angle of wing and engine as shown
按圖所示，固定機翼和發動機的角度

Note: 26 is spare parts.
注: 26是多余零件。



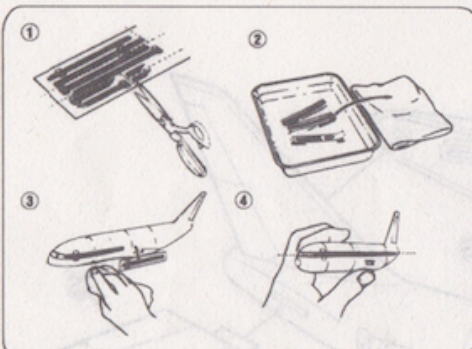
Display stand assembly
展示架的組裝

AIR FRANCE

AIR FRANCE B-747-400

Marking & painting

標貼及着色指示

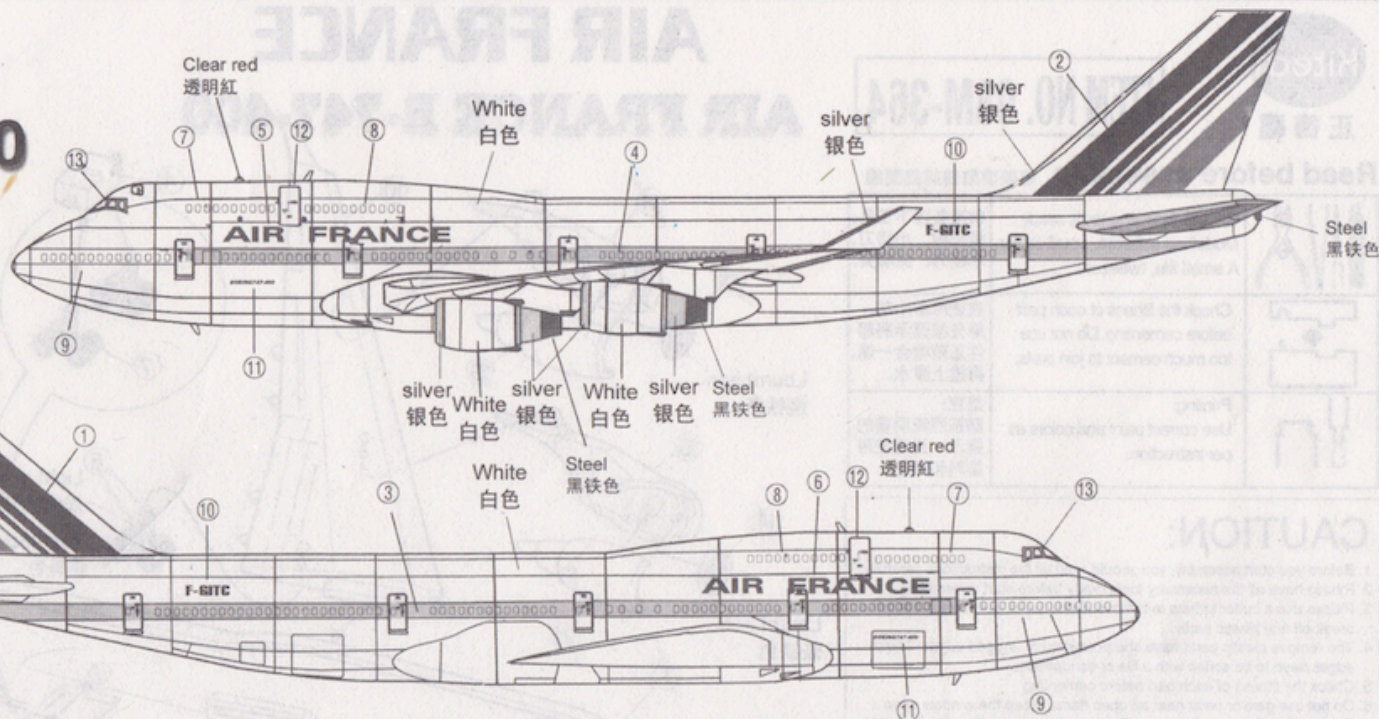


Correct Method for Applying Decals

1. Clean model surface with wet cloth.
2. Cut each design out of decal sheet and dip them in warm water for 20 seconds.
3. Check with finger tip if design is loose on base paper. If so, place it on proper position on model and slide off base paper leaving design on model.
4. Move design to exact position with wet finger tip, and push out excess water and air bubbles under decal with soft cotton cloth.
5. When decals get dry, wipe off with wet cloth excess glue left around decals.

貼上水印標貼的正確方法

1. 用濕布抹干淨模型表面。
2. 按照各標貼的形狀從標貼紙上切出，浸到溫水之中約 20 秒。
3. 用指尖試行觸摸以確定標貼是否已脫離底紙，如果屬實，則把標貼連底紙放到模型表面的適當位置上，小心地將底紙移去，把標貼留在模型表面。
4. 以濕水的指尖把標貼到正確的位置上，再用柔軟的棉質布料把標貼輕壓，以擠出標貼底下的氣泡和水份。
5. 標貼干后，用濕布輕拭標貼及其附近的模型表面，以洗去可能殘留在標貼附近的多余膠水，確保效果美。



KIU HUNG TOYS CO., LTD
Tel: (852) 2693 0368 Fax: (852) 2693 1189
14/F., Yale Ind. Centre, 61-63 Au Pui Wan Street,
Fotan, Shatin, Hong Kong.
Email: kh@kiuhung.com Web-site: www.kiuhung.com

中国总经销
奇嘉礼品玩具有限公司
地址：福州市杨桥东路118-122号侨雄商业中心A座19楼
电话：0591-7536818 传真：0591-7539838
电邮：khpj@pub1.fz.fj.cn

Kitech

正德福

ITEM NO. 08M-364