

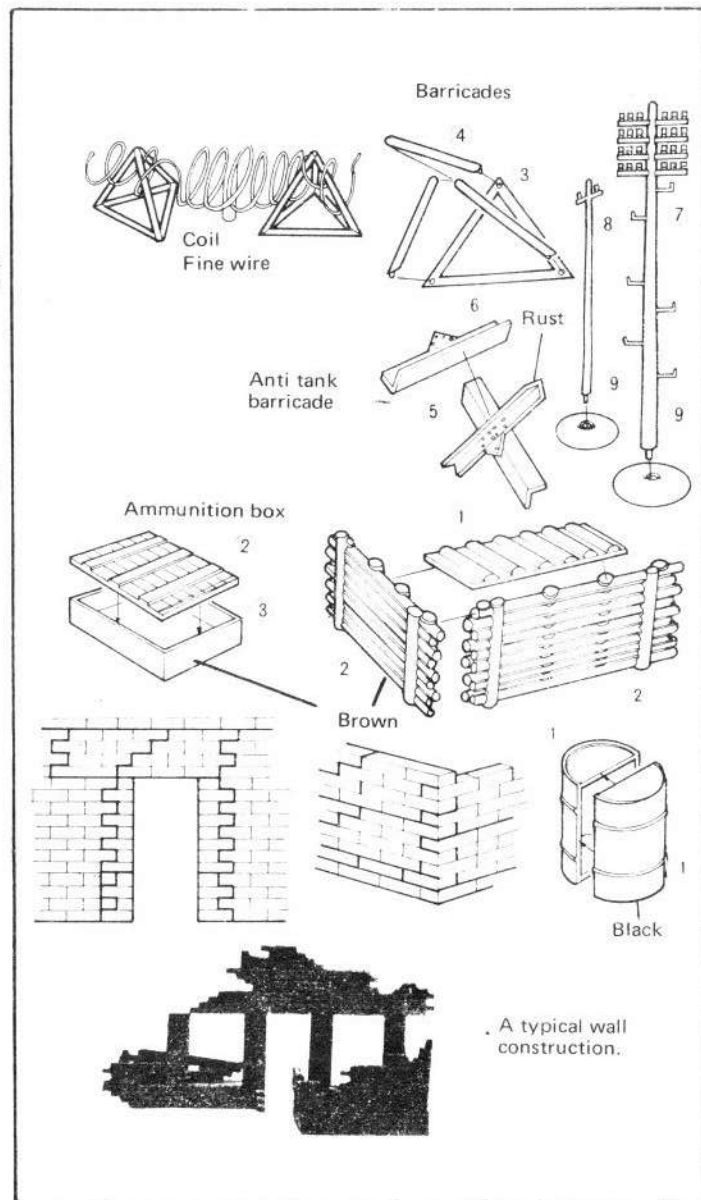
## BARRICADES

Cement together as shown (two types). Wire may be coiled on a pencil to simulate barbed wire enclosures.

## FIELD EQUIPMENT

The bricks can be used to build walls or war-torn buildings, and sand bags for gun emplacements. Place barrels, ammunition boxes and gas cans in the field or in storage.

- Thread can be cemented to the tops of the poles.
- Gas cans should be painted red or yellow.
- Sand bags should be painted light beige.



For catalog send 75¢ to:  
 ENTEX INDUSTRIES, INC.  
 1016 EAST BURGROVE  
 CARSON, CALIFORNIA 90746

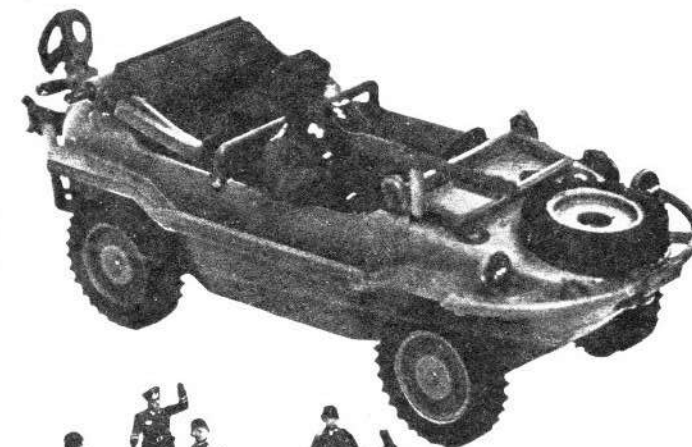


ENTEX T.M.

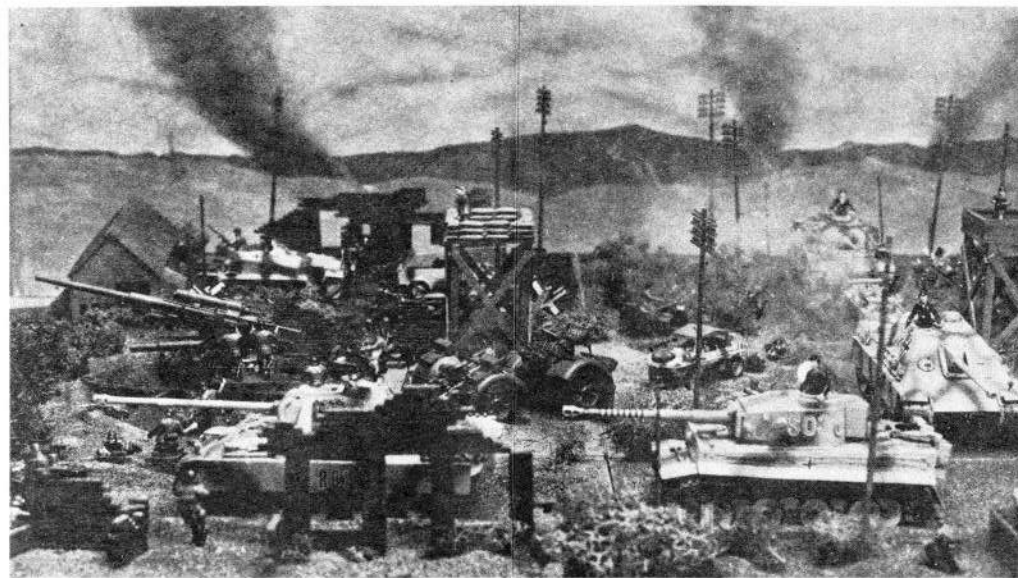
# SCHWIMM WAGEN

German

BATTLEGROUND SERIES T.M.



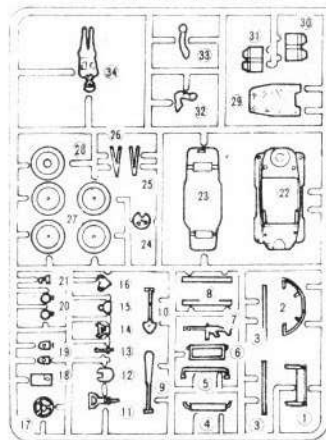
A wide variety of vehicles, both German and U.S., are available in this series. They can be used to make small dioramas or combined with other sets. They are also of value in extending or supplementing Battleground Series™ Diorama Sets, which include plastic bases. To make a diorama, decide the scene you wish to create and cut a piece of thin wood or card the size you require. The surface can be covered with clay, painted, papier-mache, or sand over glue. The scene can be improved by the addition of small rocks and twigs to represent trees or shrubs. There is no limit to the realism you can create with a little imagination.



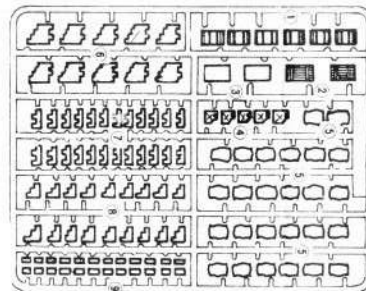
Photograph of a diorama made with Battleground Series™ Diorama Sets.



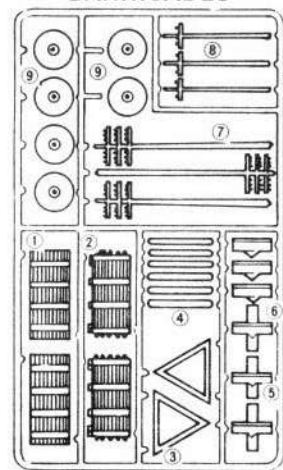
### SCHWIMMWAGEN



### SUPPLIES AND WALLS



### BARRICADES



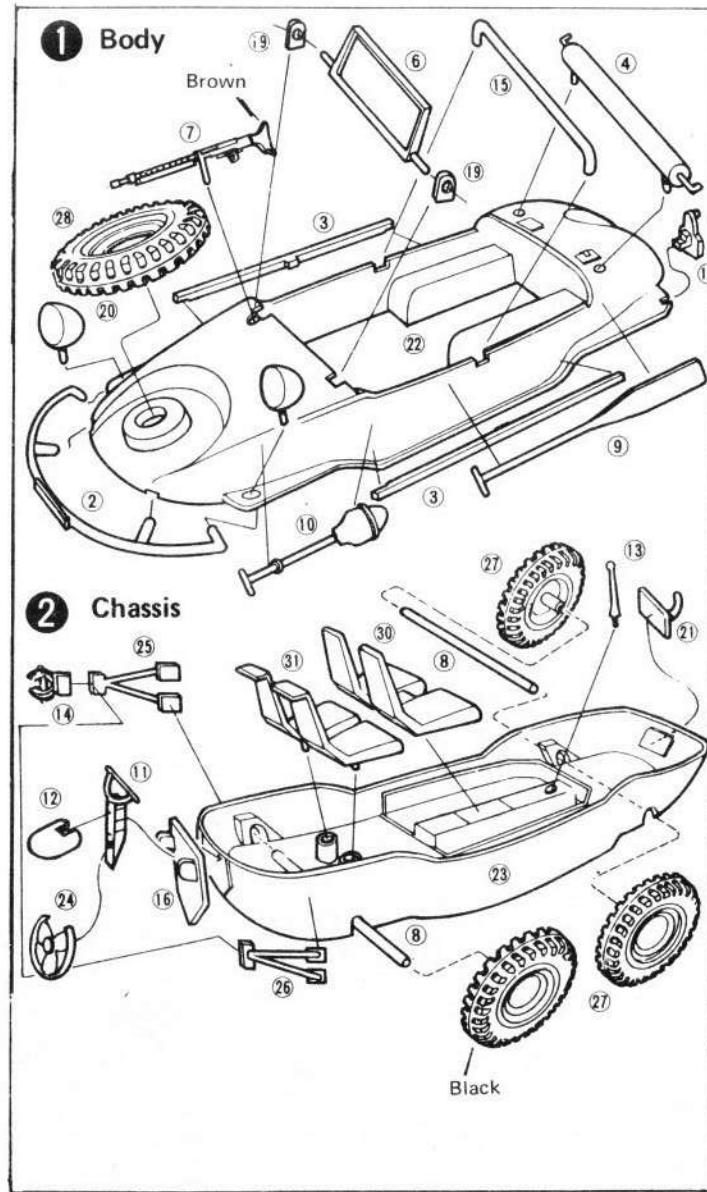
#### Note

- Remove parts from the runners as needed.
- Use a sharp knife or nippers.
- Use a good model kit cement.
- Hold small parts in place with tweezers.
- Paint as you proceed.
- See picture on the pack for a guide.
- Use model kit enamel (not lacquer).
- Trim off sharp edges with a sharp knife, file or emery board.

### [ SCHWIMM WAGEN ] AMPHIBIAN

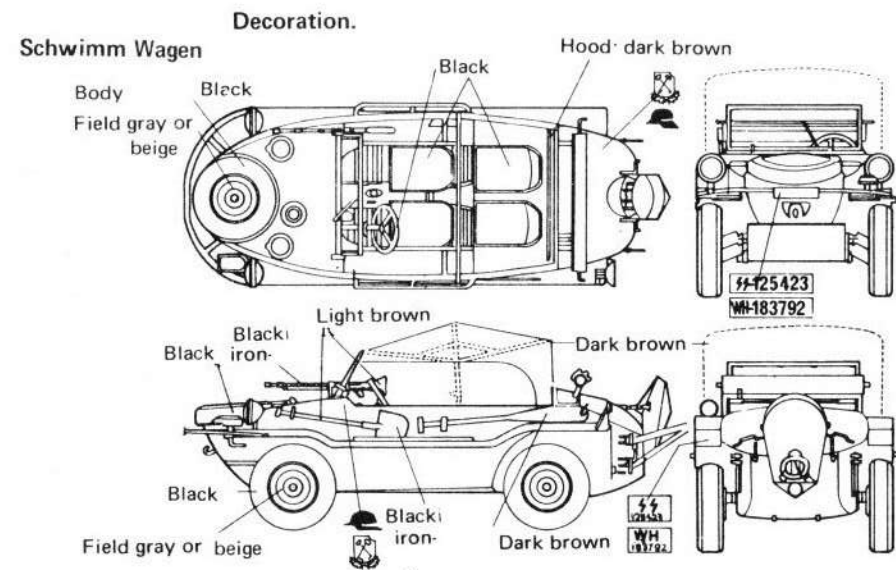
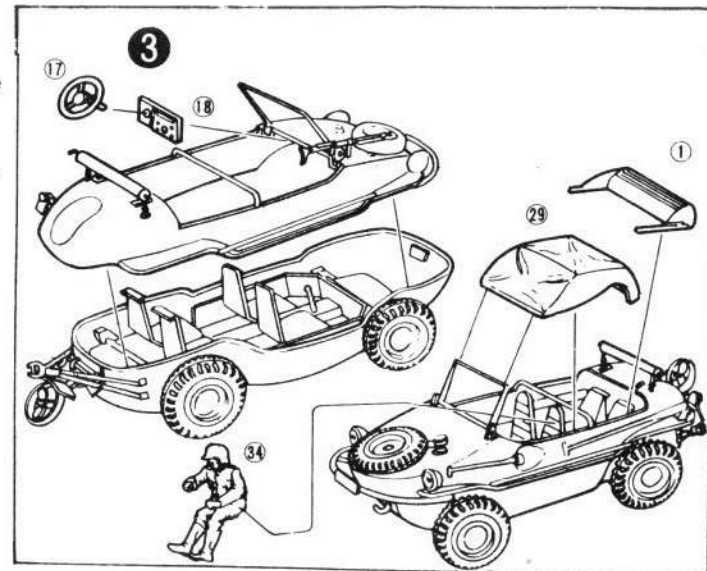
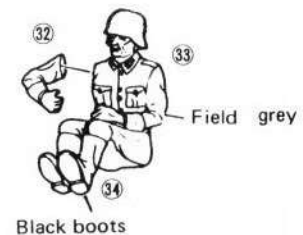
**1** Cement 19 (2) to the body with the windshield 6 in the holes, and cement all other parts in place as shown.

**2** Cement 12 and 24 to 11. Place shafts 8 through the chassis 23 (do not cement). Cement wheels on the ends of the shafts. Cement all other parts in the positions shown.



**3** Cement the steering wheel 17 to the dashboard 18 and to the body. Cement the body to the chassis. Assemble the driver to that his hands touch the wheel when placed in the seat. Cement 29 or 1 in place at your option.

#### Figure



To make iron color, mix black with silver.